

PRODUCT DATASHEET

Confidex SteelWING™



Metal tuned UHF label with excellent performance on all surfaces.

ELECTRICAL SPECIFICATION

Device type

Class 1 Generation 2 passive UHF RFID transponder

Air interface protocol

EPCGlobal Class1 Gen2 ISO 18000-6C

Operational frequency

Global 865-928MHz

IC type

NXP UCODE G2XM™

Memory configuration

EPC 240 bit; User 512 bit; TID 64 bit

Read range (2W ERP)*

EU on metal up to 9 m / 30 ft

US on metal up to 11 m / 36 ft

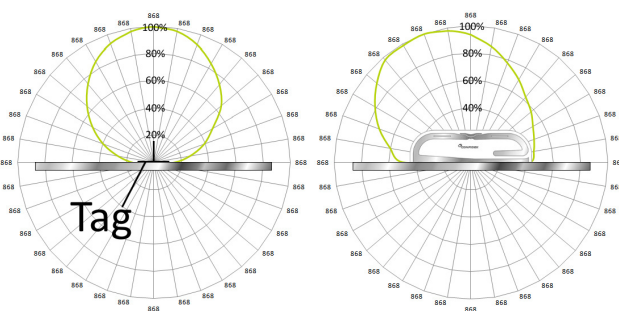
Applicable surface materials

Metallic surfaces.

* Read ranges are theoretical values that are calculated for non-reflective environment, in where antennas with optimum directivity are used with maximum allowed operating power according to ETSI EN 302 208 (2W ERP). EU = 865 - 868 MHz, US = 902 - 928 MHz.

RADIATION PATTERNS

Measured on 20x20cm metal plate



MECHANICAL SPECIFICATION

Tag materials

White / Transparent PET

Background adhesive

High performance acrylic adhesive specifically for low surface energy materials

Weight

0,6 g

Delivery format

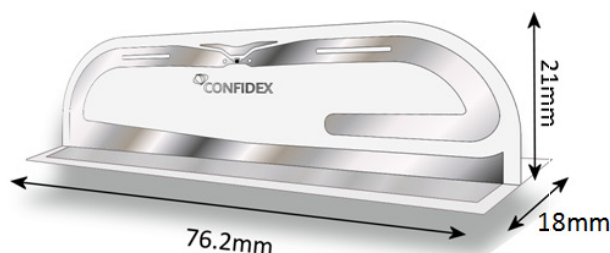
Single

Amount in box

400 pcs

Tag dimensions

After installed: 76,2 x 18 x 21 mm / 3 x 0.71 x 0.83 in



ENVIRONMENTAL RESISTANCE

Operating temperature

-35°C to +85°C / -31°F to +185°F

Ambient temperature

-35°C to +85°C / -31°F to +185°F

Water resistance

Good, tested 5 hours in 1m deep water (IP68)

Washing resistance

Good, tested 300 cycles with water at 175bar / 80°C

Chemical resistance

No physical or performance changes in:

- 168h Salt water (salinity 10%) exposure
- 168h Motor oil exposure
- 24h Sulfuric acid (10%, pH 2) exposure
- 10min NaOH (10%, pH 13) exposure
- 10min Acetone exposure

Storage condition

2 years in +20°C / 50% RH (shelf life for adhesive)

Expected lifetime

Years in normal operating conditions

Values in the table are the best recommendations; resistance against environmental conditions depends on the combination of all influencing factors, exposure duration and chemical concentrations. Thus, product's final suitability for certain environmental conditions is recommended to be tested. Contact Confidex for more specific information.

PERSONALIZATION OPTIONS

Pre-encoding

- Customer specific encoding of EPC or user memory. Locking permanently or with password.

Customized printing

- Customer specific layout including logo, text, numbers, barcodes etc.

INSTALLATION INSTRUCTIONS



Confidex SteelWING™ is fixed on the surface with its background adhesive. Tag structure consists of two adhesive flaps, which need to be exposed before fixing the tag.

Attachment process:

1. Open the white flap
2. Attach the white side firmly on the item
3. Remove the brown silicone liner
4. Attach the metallic flap firmly on the item.

Ideal installation conditions are +20°C (+68°F) / 50% RH. For exceptional conditions, please contact Confidex. Adhesive of the label will provide best adhesion in 24 hours after the installation. Bond strength can be improved with firm application pressure. Always clean and dry the surface for obtaining the maximum bond strength.

During attachment to the identified asset, please avoid touching the background adhesive. If the location on the asset needs to be changed, please use a new tag instead of re-placing the used one; the adhesion will suffer from the re-placement.

Minimum bending diameter of the Confidex SteelWING™ is defined to be 50mm. Do not bend the label above the limit. Never touch on the location of the IC. IC chip is sensitive electrical component and can be damaged if unexpected pressure is applied on the chip.

ORDER INFORMATION

Product number: 3000126

Product name: Confidex SteelWING™ NXP G2XM

For other versions, additional information and technical support contact Confidex Ltd.

DISCLAIMER

THE MATERIALS, PRODUCTS AND SERVICES ARE SOLD SUBJECT TO ITS STANDARD CONDITIONS OF SALE, WHICH ARE INCLUDED IN THE APPLICABLE DISTRIBUTOR OR OTHER SALES AGREEMENT. ALTHOUGH ANY INFORMATION, RECOMMENDATIONS, OR ADVICE CONTAINED HEREIN IS GIVEN IN GOOD FAITH, CONFIDEX MAKES NO WARRANTY OR GUARANTEE, EXPRESS OR IMPLIED, (i) THAT THE RESULTS DESCRIBED HEREIN WILL BE OBTAINED UNDER END-USE CONDITIONS, OR (ii) AS TO THE EFFECTIVENESS OR SAFETY OF ANY DESIGN INCORPORATING ITS PRODUCTS, MATERIALS, SERVICES, RECOMMENDATIONS OR ADVICE. EXCEPT AS PROVIDED IN CONFIDEX STANDARD CONDITIONS OF SALE, CONFIDEX AND ITS REPRESENTATIVES SHALL IN NO EVENT BE RESPONSIBLE FOR ANY LOSS RESULTING FROM ANY USE OF ITS MATERIALS, PRODUCTS OR SERVICES DESCRIBED HEREIN.

Each user bears full responsibility for making its own determination as to the suitability of Confidex products, materials, services, recommendations, or advice for its own particular use. Each user must identify and perform all tests and analyses necessary to assure that its finished systems incorporating Confidex products, materials, or services will be safe and suitable for use under end-use conditions. Nothing in this or any other document, nor any oral recommendation or advice, shall be deemed to alter, vary, supersede, or waive any provision of this Disclaimer, unless any such modification is specifically agreed to in a writing signed by Confidex.