

PRODUCT DATASHEET

Confidex License Plate Tag™



Rugged RFID tag for electronic license plates

ELECTRICAL SPECIFICATION

Device type

Class 1 Generation 2 passive UHF RFID transponder

Air interface protocol

EPCGlobal Class1 Gen2 ISO 18000-6C

Operational frequency

EU 865 - 869 MHz

US 902 - 928 MHz

IC type

Impinj Monza 4E™

Memory configuration

EPC 496 bit; User 128 bit; TID 96 bit

EPC memory content

Unique number encoded as a default

Read range (2W ERP)*

EU on metal up to 8 m / 26 ft

US on metal up to 7 m / 23 ft

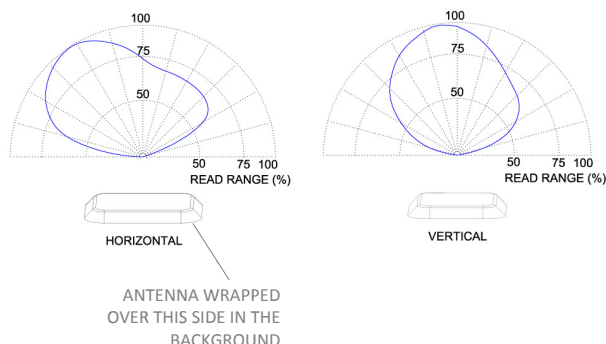
Applicable surface materials*

Metallic surfaces

* Read ranges are theoretical values that are calculated for non-reflective environment, in where antennas with optimum directivity are used with maximum allowed operating power according to ETSI EN 302 208 (2W ERP). EU = 865 - 868 MHz, US = 902 - 928 MHz. Different surface materials may have an effect on performance.

RADIATION PATTERNS

On metal



MECHANICAL SPECIFICATION

Tag materials

High quality engineering plastics.

Weight

12 g

Delivery format

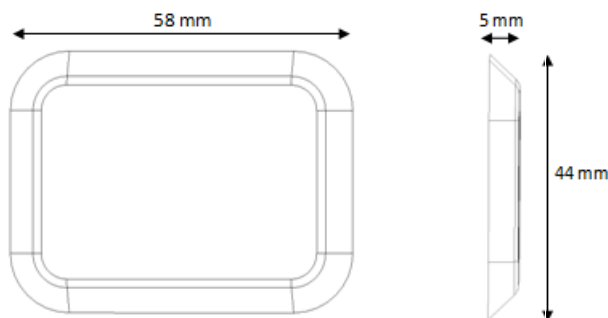
Single

Amount in box

960pcs

Dimensions

58 x 44 x 5 mm / 2.28 x 1.73 x 0.20 in



ENVIRONMENTAL RESISTANCE

Operating temperature

-30°C to +60°C / -22°F to +140°F

Ambient temperature

-30°C to +60°C / -22°F to +140°F

IP classification

IP65

Weather ability

Suitable for outdoor use

Impact resistance

Very good protection against physical impacts

Chemical resistance

Tolerates vehicle washing process with typical solvents

Expected lifetime

Years in normal operating conditions

Values in the table are the best recommendations; resistance against environmental conditions depends on the combination of all influencing factors, exposure duration and chemical concentrations. Thus, product's final suitability for certain environmental conditions is recommended to be tested. Contact Confidex for more specific information.

PERSONALIZATION OPTIONS

Pre-encoding

- Customer specific encoding of EPC or user memory. Locking permanently or with password.

Customized tampo printing

- Customer specific layout including logo or static text.

Customized laser engraving

- Customer specific layout including logo, text, numbers, barcodes.

Polarization of Confidex License Plate Tag™ is according to its longest dimension.



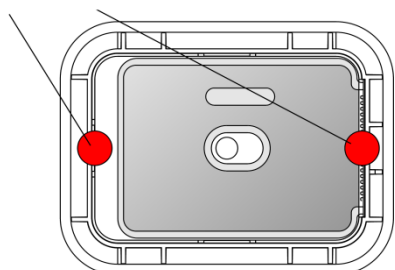
INSTALLATION INSTRUCTIONS

Tag is designed to be attached on metallic license plate

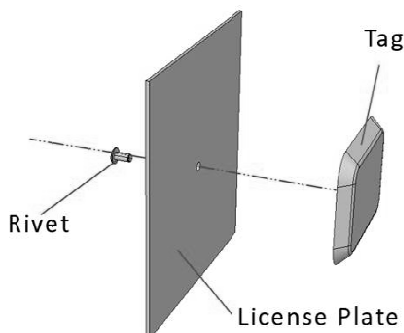
Fixing procedure:

1. Make 3,3 - 3,4 mm hole to the license plate
2. Add thin layer (max 0,5mm) of silicone sealant or adhesive on two locations of the tag backside like shown in picture below. Sealant will both help the attachment process and it will prevent possible vibrations caused by resonances in vehicle. In long term, such vibrations can cause tag attachment to loose and eventually RFID-tag may fall off. Sealant can be silicon, epoxy or other elastic adhesive material.

Adhesive locations



3. Place the tag firmly on the correct location on the plate and attach it with 3,2 mm / 6 mm pop rivet. Choose the rivet material according to license plate to avoid rivet corrosion. Rivet will not be visible from the front of the tag.



ORDER INFORMATION

Product number: 3000517

Product name: Confidex License Plate Tag™ ETSI M4E

Product number: 3000518

Product name: Confidex License Plate Tag™ FCC M4E

For other versions, additional information and technical support contact Confidex Ltd.

DISCLAIMER

THE MATERIALS, PRODUCTS AND SERVICES ARE SOLD SUBJECT TO ITS STANDARD CONDITIONS OF SALE, WHICH ARE INCLUDED IN THE APPLICABLE DISTRIBUTOR OR OTHER SALES AGREEMENT. ALTHOUGH ANY INFORMATION, RECOMMENDATIONS, OR ADVICE CONTAINED HEREIN IS GIVEN IN GOOD FAITH, CONFIDEX MAKES NO WARRANTY OR GUARANTEE, EXPRESS OR IMPLIED, (i) THAT THE RESULTS DESCRIBED HEREIN WILL BE OBTAINED UNDER END-USE CONDITIONS, OR (ii) AS TO THE EFFECTIVENESS OR SAFETY OF ANY DESIGN INCORPORATING ITS PRODUCTS, MATERIALS, SERVICES, RECOMMENDATIONS OR ADVICE. EXCEPT AS PROVIDED IN CONFIDEX STANDARD CONDITIONS OF SALE, CONFIDEX AND ITS REPRESENTATIVES SHALL IN NO EVENT BE RESPONSIBLE FOR ANY LOSS RESULTING FROM ANY USE OF ITS MATERIALS, PRODUCTS OR SERVICES DESCRIBED HEREIN.

Each user bears full responsibility for making its own determination as to the suitability of Confidex products, materials, services, recommendations, or advice for its own particular use. Each user must identify and perform all tests and analyses necessary to assure that its finished systems incorporating Confidex products, materials, or services will be safe and suitable for use under end-use conditions. Nothing in this or any other document, nor any oral recommendation or advice, shall be deemed to alter, vary, supersede, or waive any provision of this Disclaimer, unless any such modification is specifically agreed to in a writing signed by Confidex.

